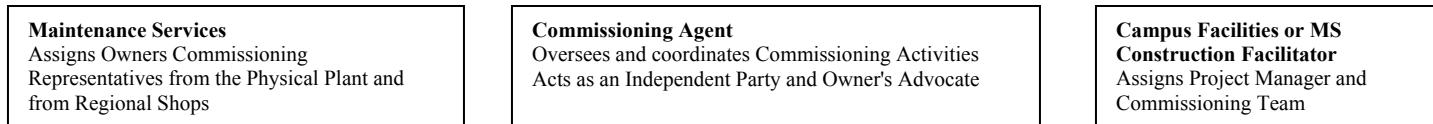
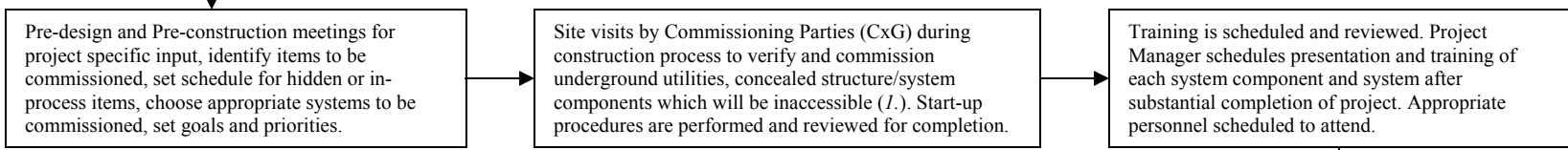


# WMU COMMISSIONING PROCESS FLOW CHART

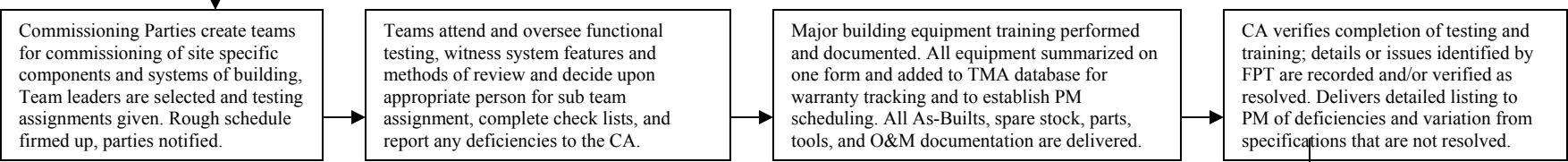


*Commissioning Group (CxG) Formed, MS, CA and CF Commissioning Representatives with Project Manager*



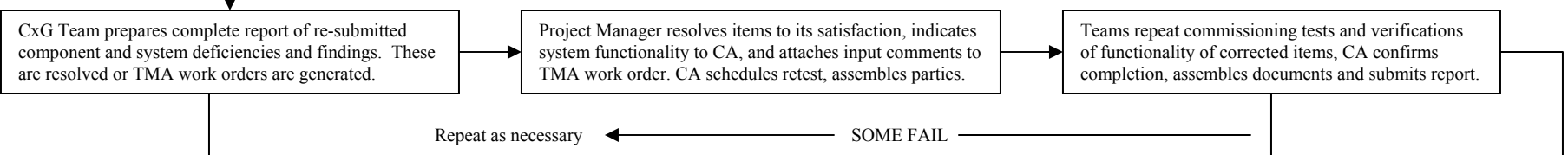
Project nears completion, punch list items addressed and exhausted, final documentation provided

**\*\*FUNCTIONAL PERFORMANCE TESTING BEGINS\*\***



All teams report completion of inspections and verification of system

**\*\*DOCUMENTATION AND CORRECTION PROCESS BEGINS\*\***



Repeat as necessary

*(I.)*  
 Commissioning parties review prints and documents, distribute information, collect data, reports and collate information, document findings and concerns. Start-ups and verification documents reviewed as necessary for inclusion in final report. Support staff attends and assists with demonstrations and tests when appropriate.

**\*\*COMMISSIONING PROCESS COMPLETE\*\***